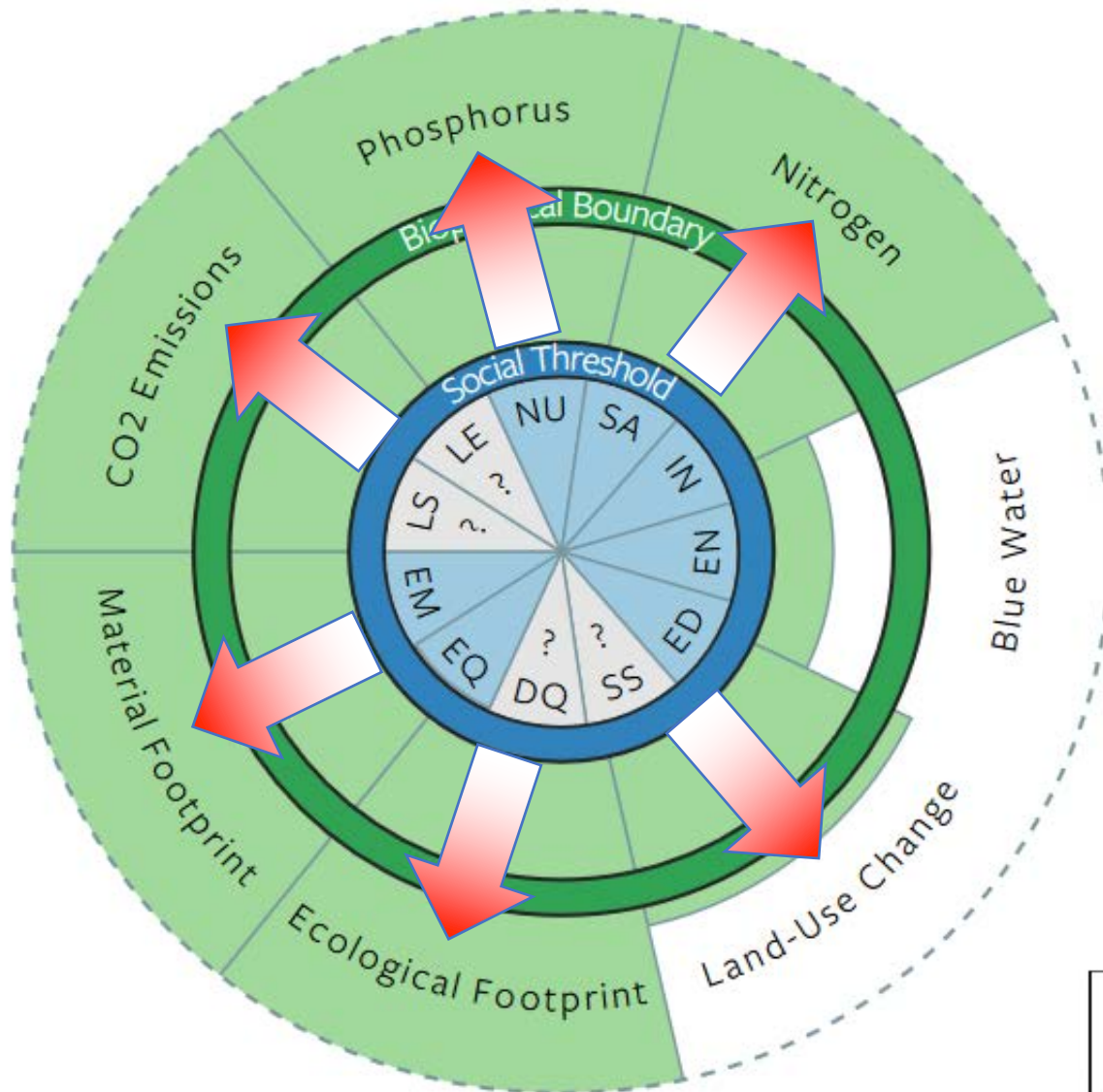


Die vier grossen Krisen – Herausforderungen für die SP

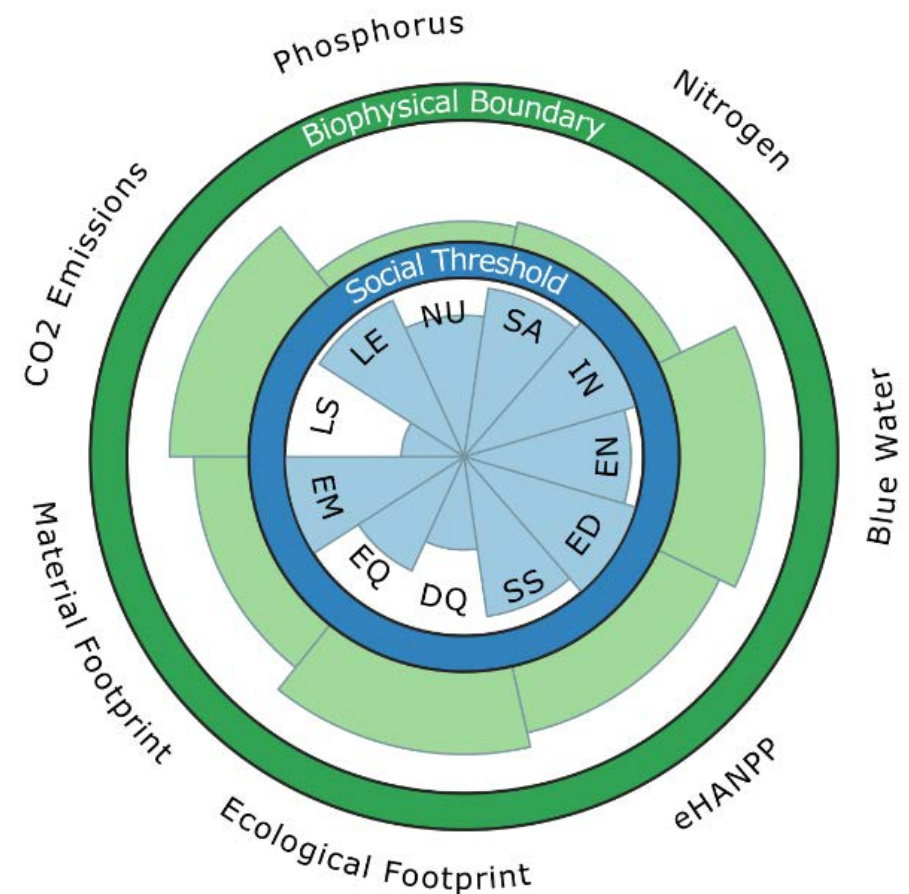
Prof. Christian Arnsperger
Universität Lausanne

Tagung der SP Aargau
«Unsere Grundwerte in den aktuellen Krisen»
On-line – Samstag 8. Mai 2021

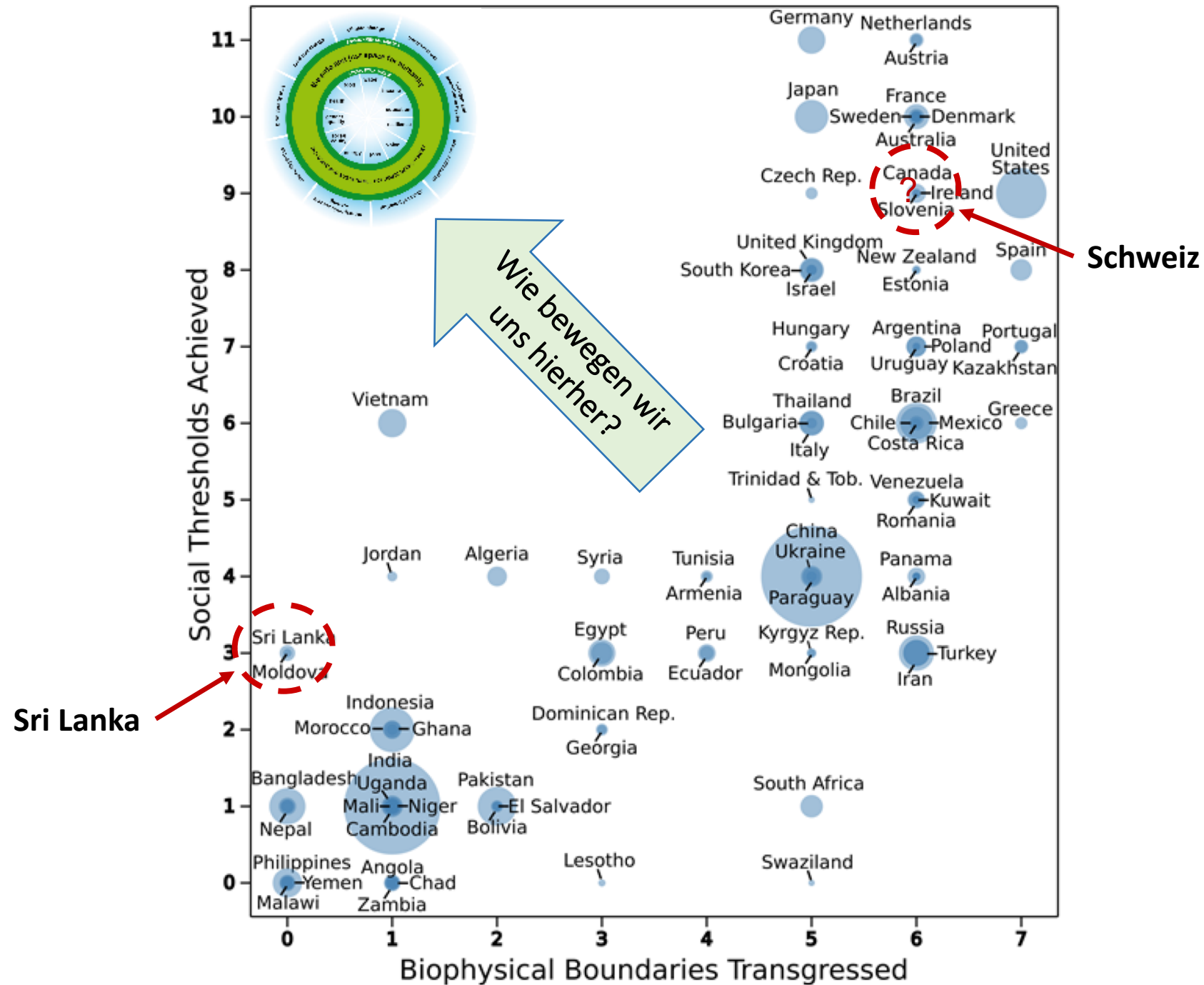
Schweiz



Sri Lanka

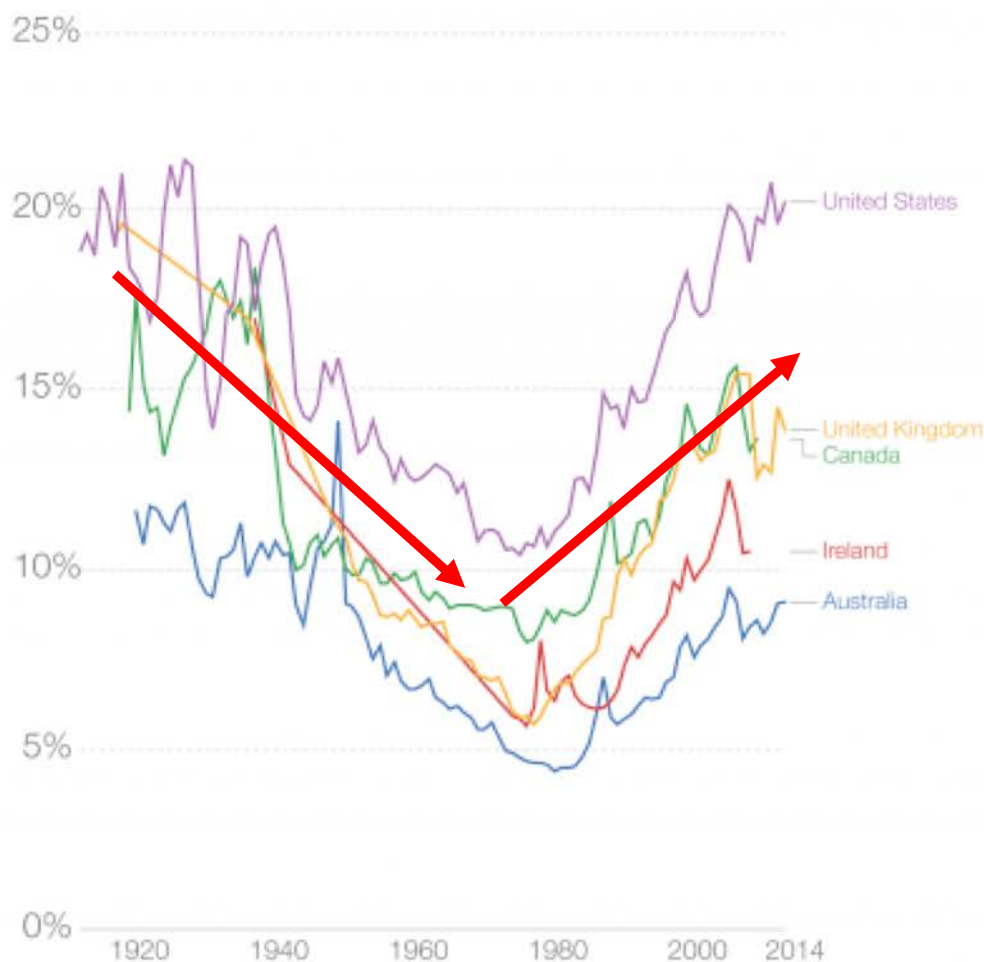


LS	Life Satisfaction	IN	Income	DQ	Democratic Quality
LE	Healthy Life Expectancy	EN	Access to Energy	EQ	Equality
NU	Nutrition	ED	Education	EM	Employment
SA	Sanitation	SS	Social Support		



Share of Total Income going to the Top 1% since 1900

The evolution of inequality in English speaking countries followed a U-shape



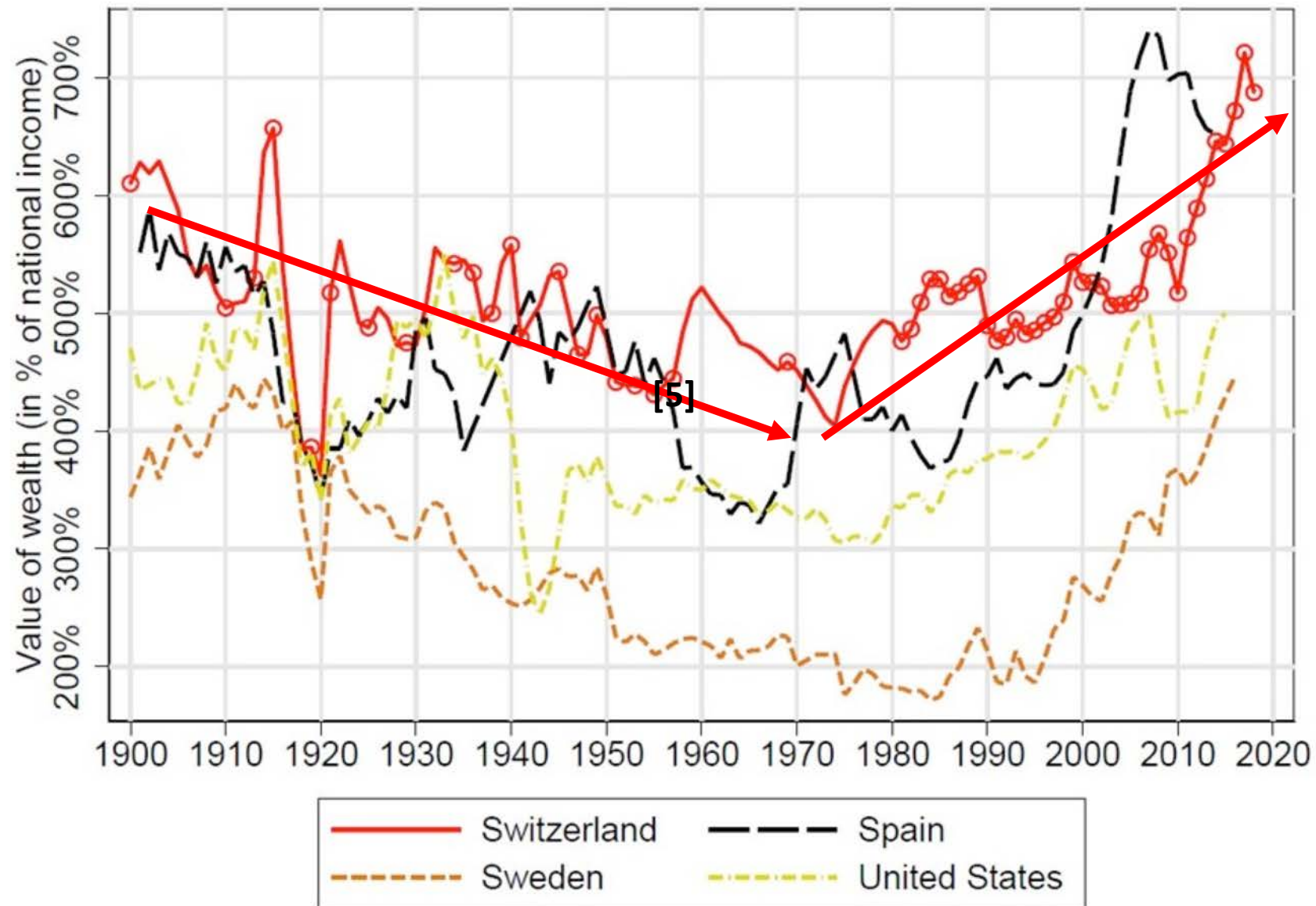
The evolution of inequality in continental Europe and Japan followed an L-shape



Data source: World Wealth and Income Database (2018). This is income before taxes and transfers.

This data visualisation is available at [OurWorldinData.org](https://ourworldindata.org). There you find the raw data and more visualisations on inequality and how the world is changing. Licensed under [CC-BY-SA](https://creativecommons.org/licenses/by-sa/4.0/) by the author Max Roser.

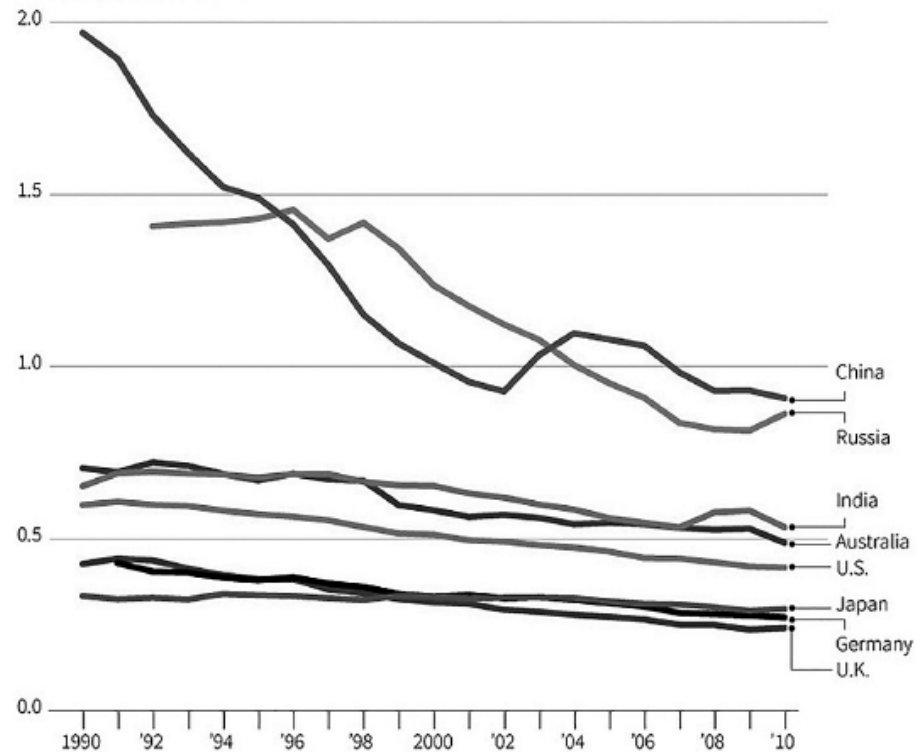
Figure 2: Private Wealth-Income Ratio in International Comparison, 1900-2018



Carbon intensity of economies

How much carbon dioxide (CO₂) countries emit per dollar of economic output is a good measure of how efficient they are.

Kg of CO₂ per \$1 GDP (PPP)



Source: U.N. data

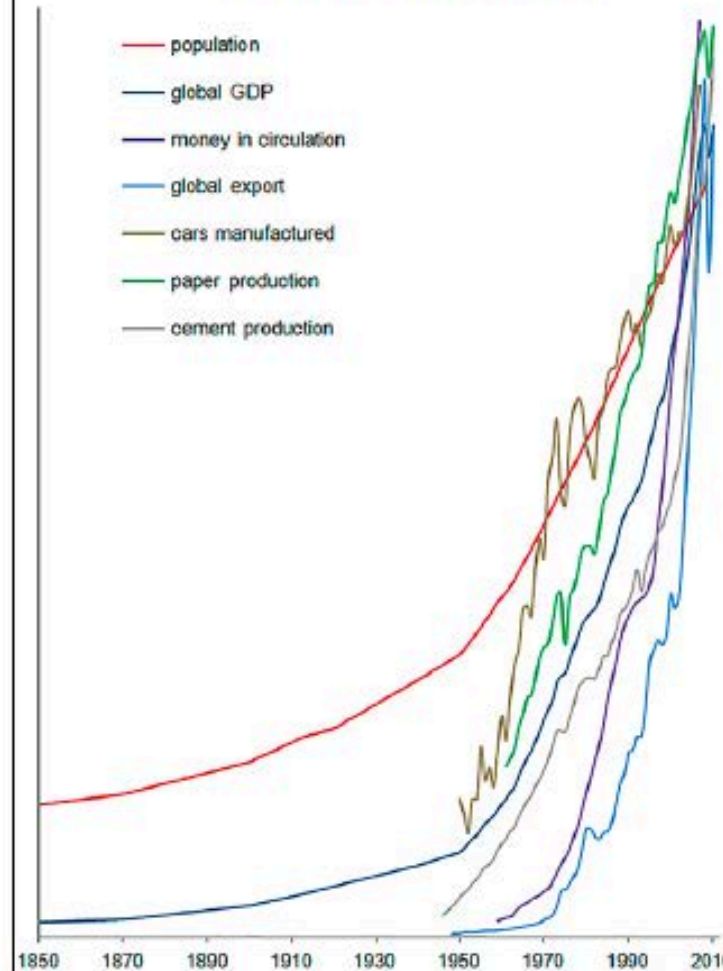
G. Cabrera, 24/09/2013

REUTERS

Ständig bessere Effizienz ...

World of Growth - Economy

- population
- global GDP
- money in circulation
- global export
- cars manufactured
- paper production
- cement production

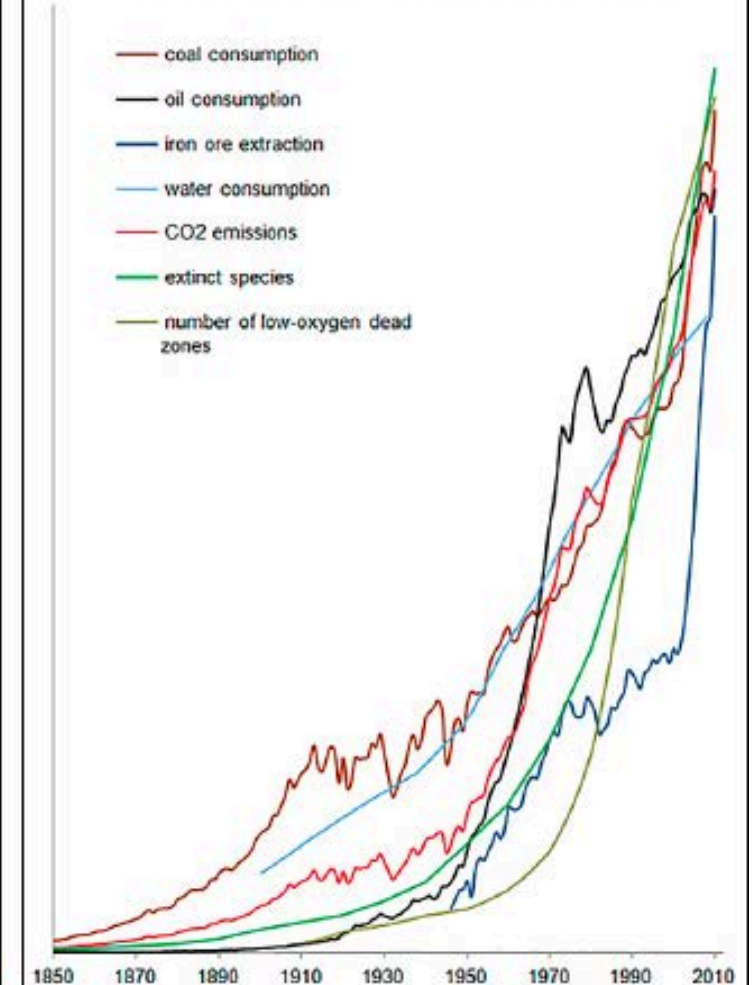


... Der Grund:

WIRTSCHAFTSWACHSTUM

Resources and environment exploitation

- coal consumption
- oil consumption
- iron ore extraction
- water consumption
- CO₂ emissions
- extinct species
- number of low-oxygen dead zones

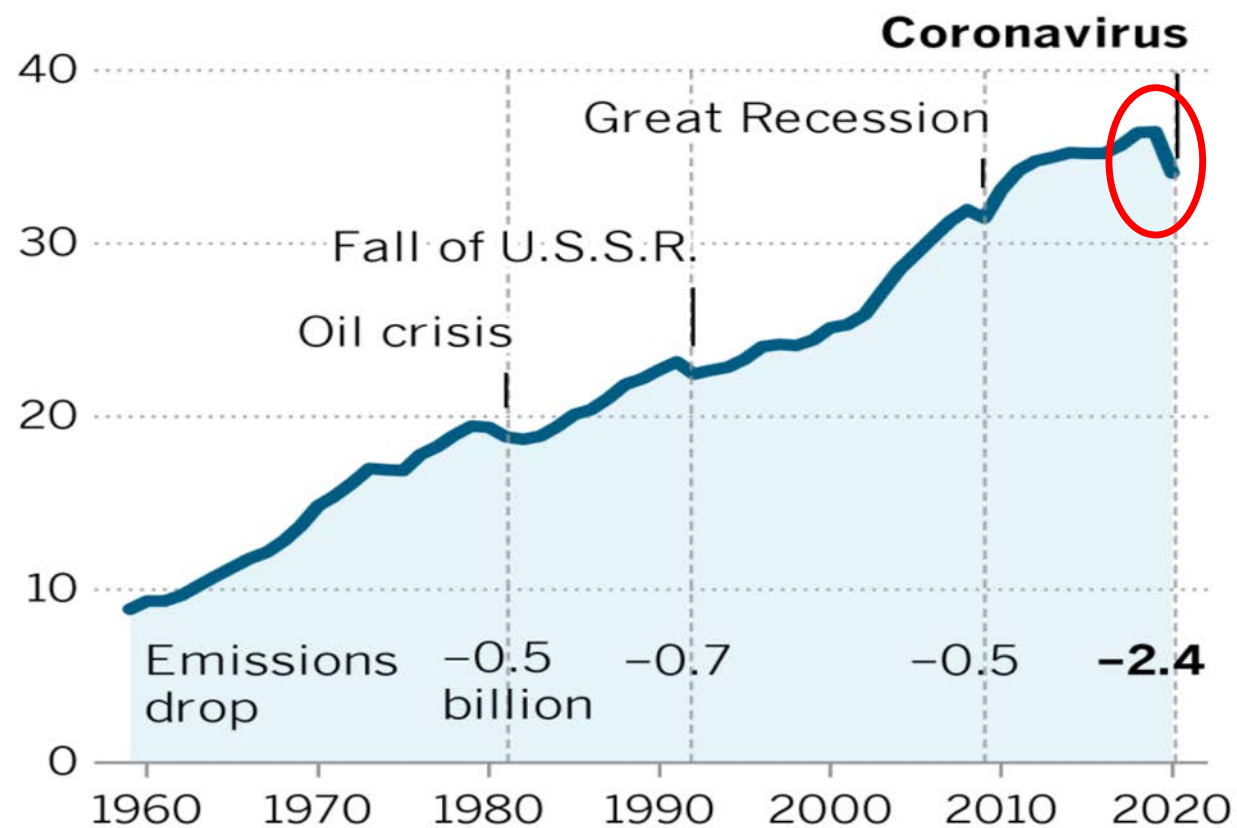


**Ständig steigender
Verbrauch ...**

Pandemic brings big drop in carbon pollution

Global emissions dip during economic downturns, but never as much as in 2020.

Fossil emissions in billions of metric tons of CO₂



Global Carbon Project

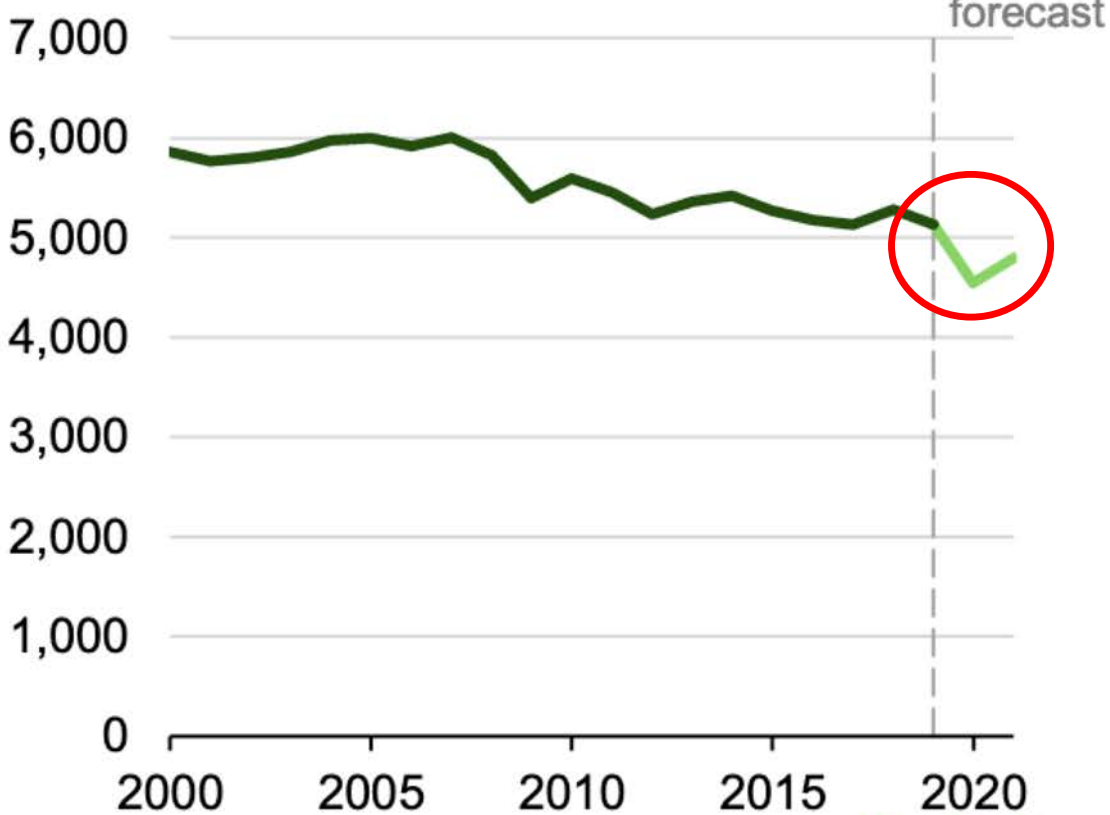
Los Angeles Times

U.S. energy-related carbon dioxide (CO2) emissions



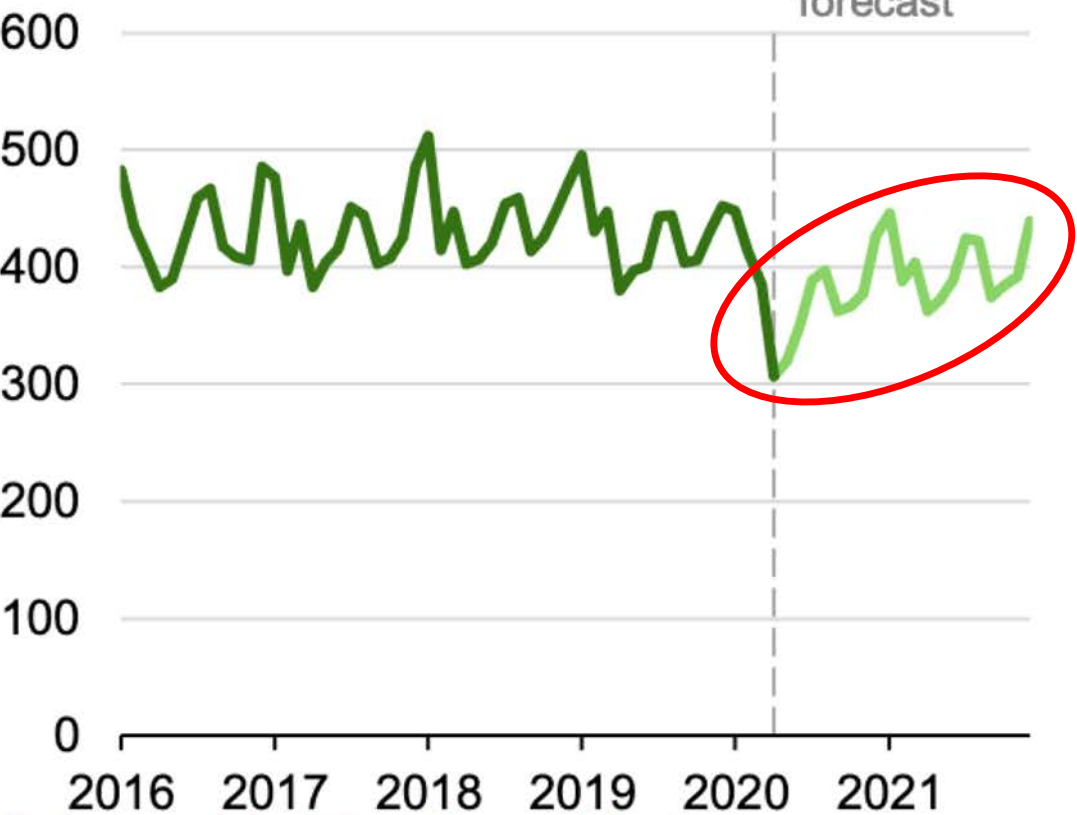
annual emissions

million metric tons



monthly emissions

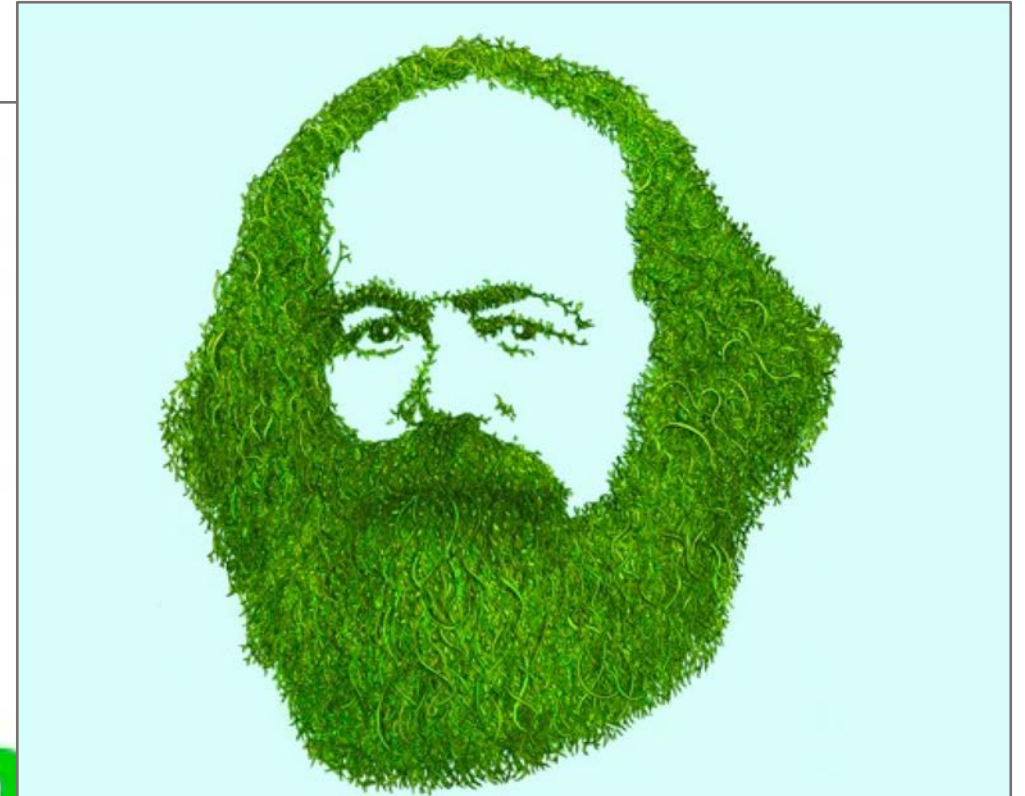
million metric tons



Source: U.S. Energy Information Administration, [Monthly Energy Review](#) and [Short-Term Energy Outlook](#)







Ethik der
Bedingungslosigkeit
Ethik des
Post-Wachstums



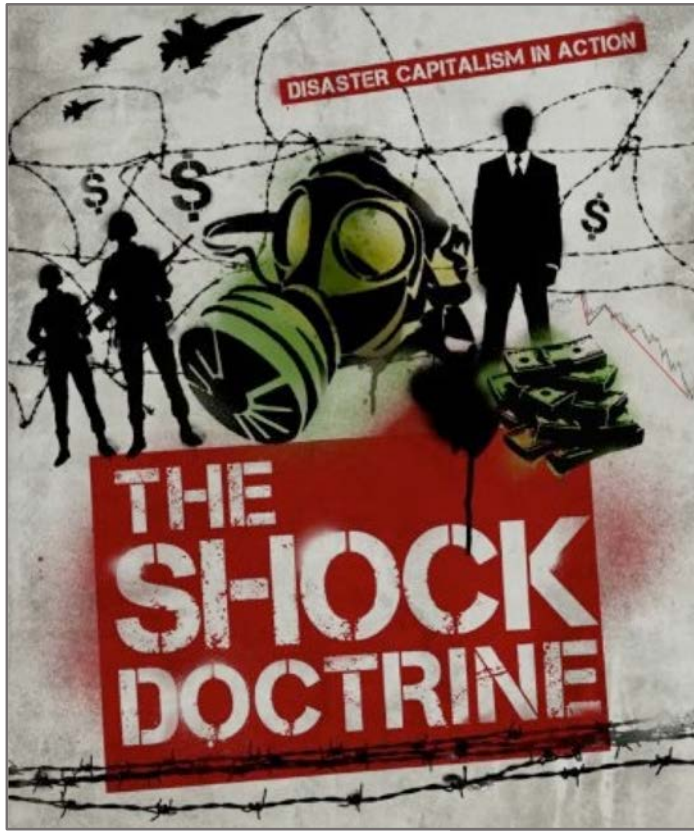


The New York Times

**The Happy, Healthy Capitalists of
Switzerland**







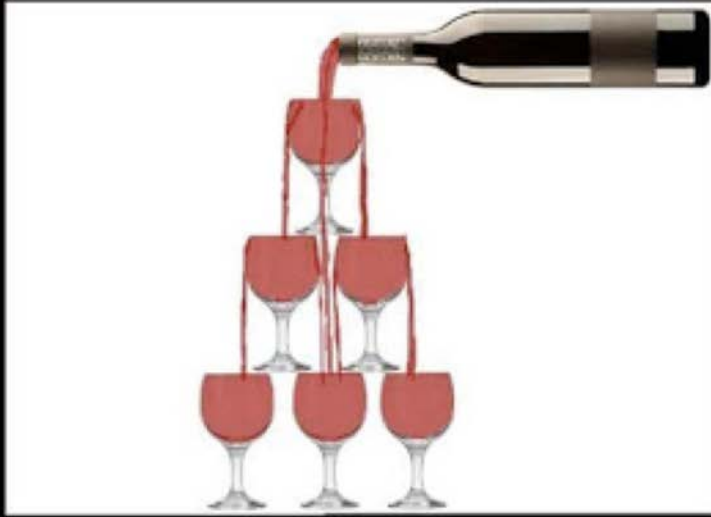
A red octagonal shape with slightly rounded corners, serving as a background for the text.

SP

RADIKALITÄT ?

Trickle down economics

How we're told it works



What actually happens



Abstimmung vom 9. Febr. 2020

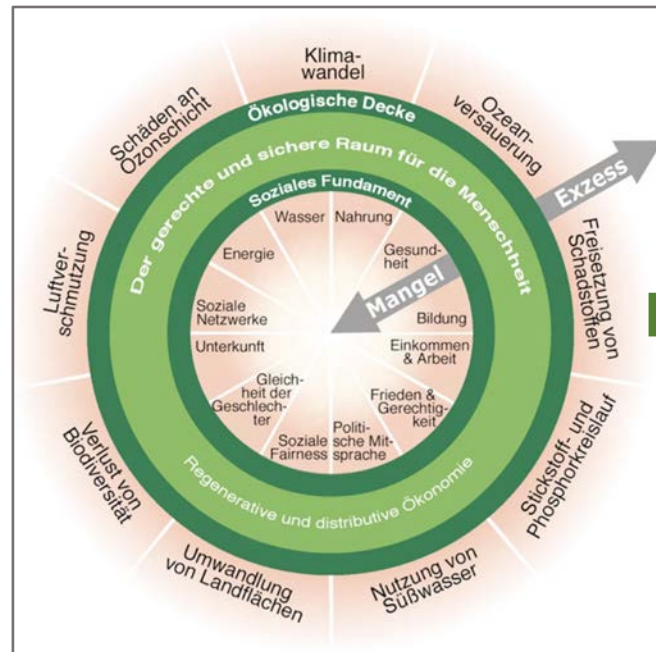


STOP
113%

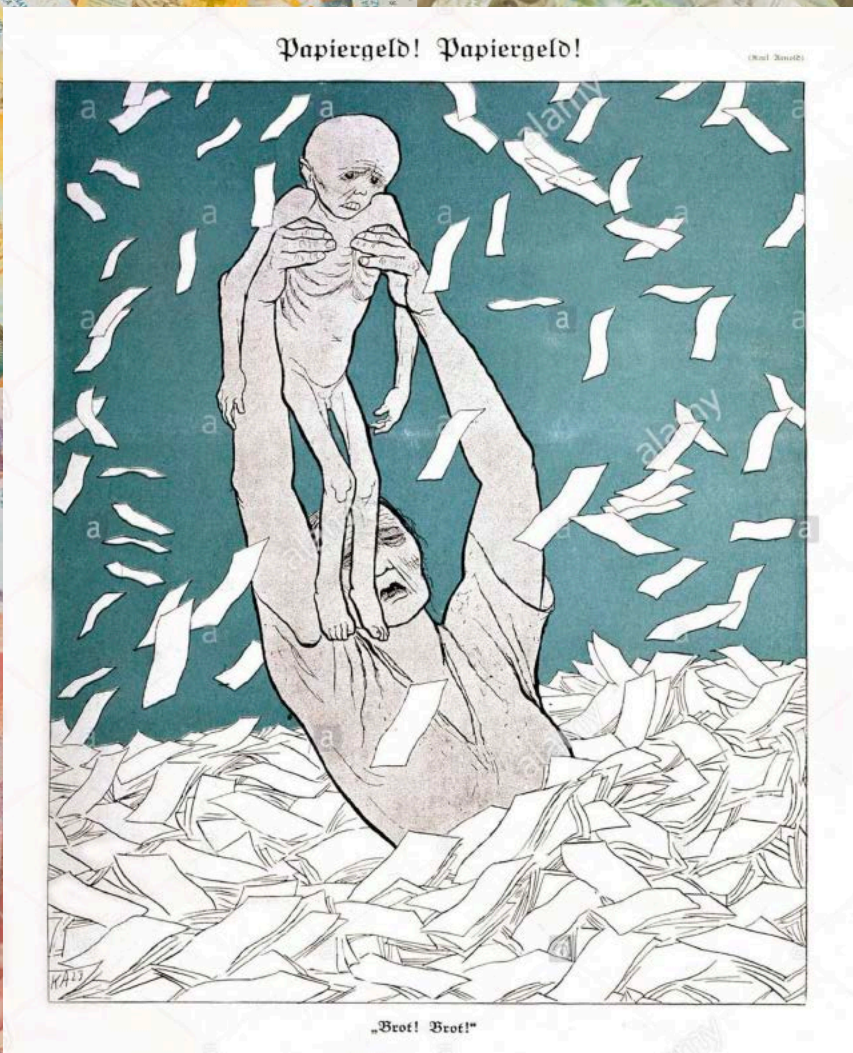
NEIN zu 3% mehr Steuern
zum Budget 2020

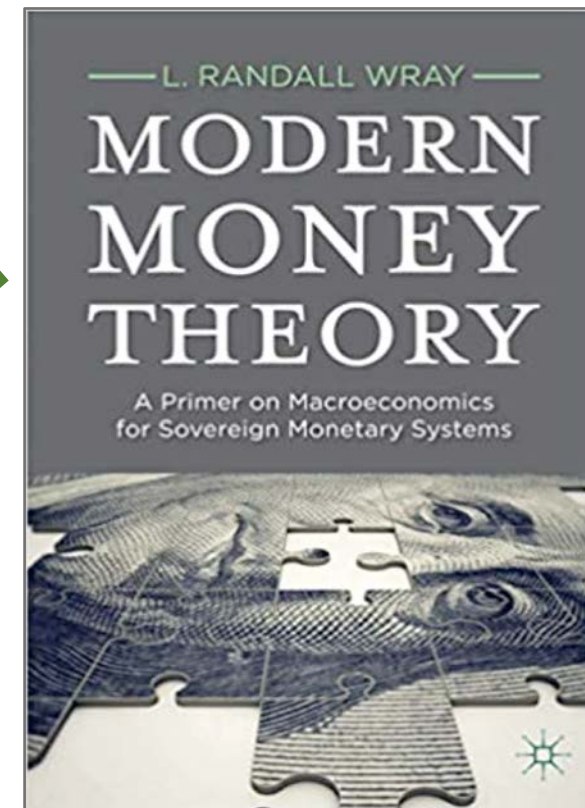
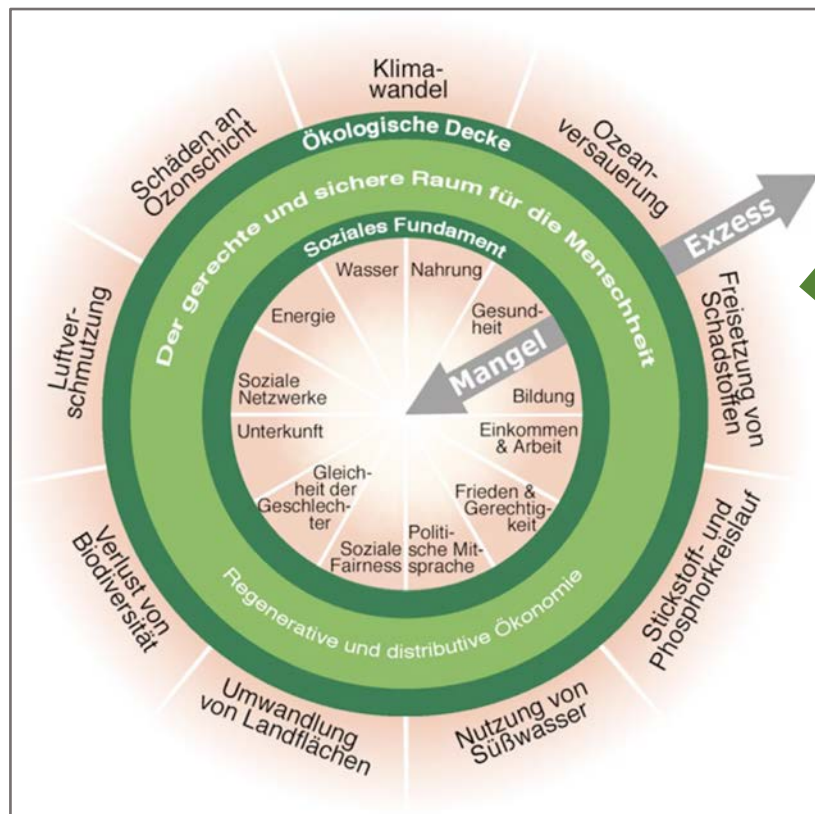
SVP Wohlen-Anglikon, www.svp-wohlen-anglikon.ch





Wesentliche öffentliche Güter
Bedingungsloses Grundeinkommen
«Permazirkuläre» Wirtschaft







SCHULDENBREMSE ?



KONSUMBREMSE ?



I WEITER SO? GEHT NICHT! WARUM GEWERKSCHAFTEN NICHT AUF WACHSTUM SETZEN SOLLTEN

Februar 2018
Von Ingrid Artus und Jan Weyand



Gewerkschaftsstrategien,
Wachstumskritik, Marx

shubert ciencia / flickr 





PS



SP



**PER TUTTI,
SENZA
PRIVILEGI!**

PS





UNIL | Université de Lausanne

Vielen Dank für Ihre Aufmerksamkeit

<https://arnsperger-perma-circular.com/>
christian.arnsperger@unil.ch